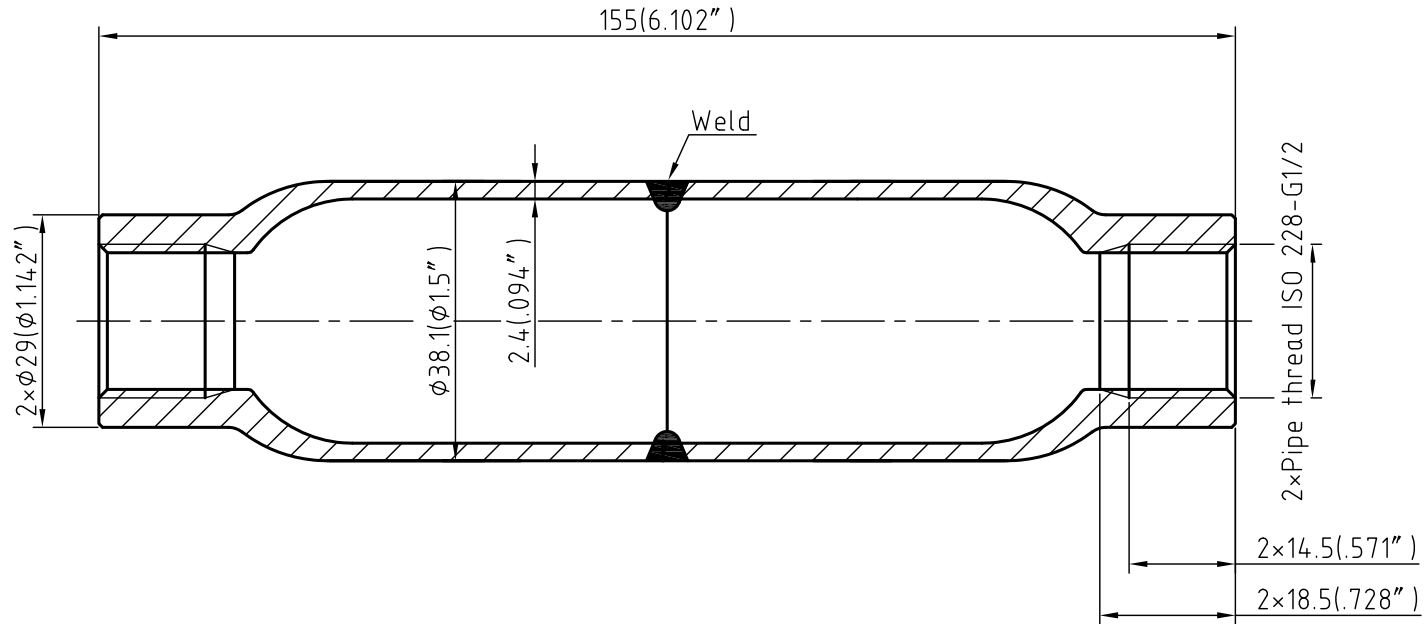



Item	Component	Material
1	Sample Cylinder	316L



Features	
Maximum working pressure	500psig(34.5Bar)@-65~100°F(-53~37°C)
Working temperature	-65~800°F(-53~426°C)

REV.	DATE	DRAWN	CHECKED	UNLESS OTHERWISE SPECIFIED ALL DIMENSIONS ARE IN MILLIMETER		 Sample Cylinder
		NAME	DATE	6L-SC5-DFRP8-100-W		
						2
						DO NOT SCALE DRAWING

NOTE:Dimensions for reference only.